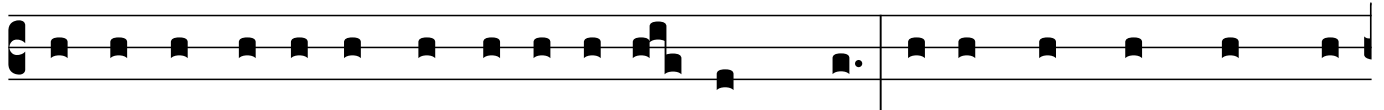


1 Corinthians 3:1-11,16-17

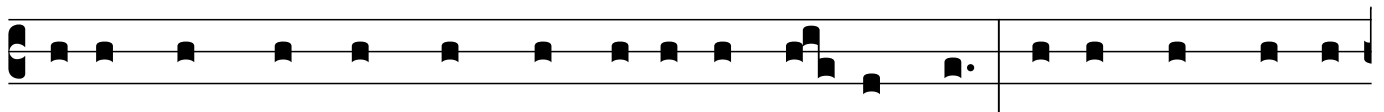
Dedication of a Church



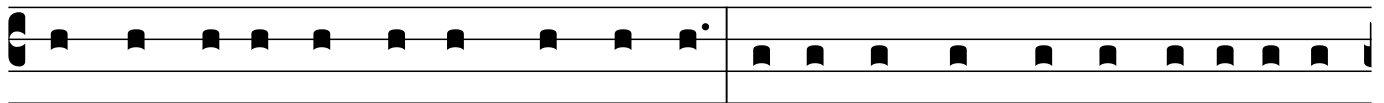
And so, brothers and sis-ters, I could not speak to you as spir-it-u-al



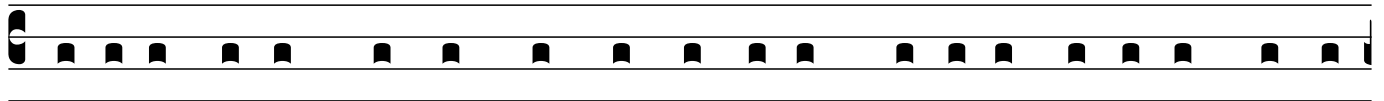
people but rather as fleshly, as infants in Christ. I fed you with milk, not



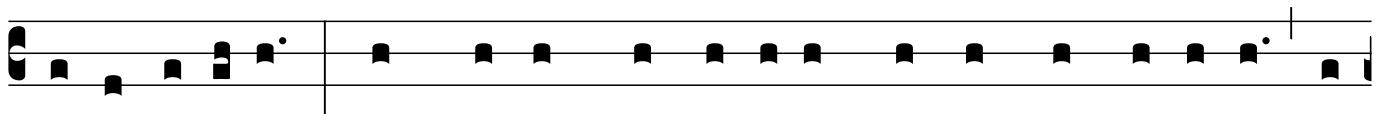
sol-id food, for you were not ready for sol- id food. E-ven now you are



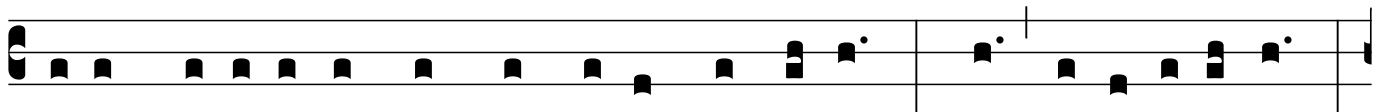
still not ready, for you are still fleshly. For as long as there is jealousy and



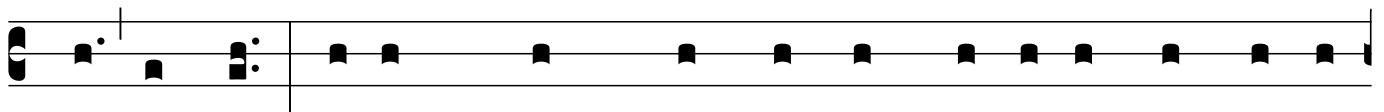
quarrel-ing among you, are you not fleshly and be-hav-ing according to hu-



man incli-nations? For when one says, “I be-long to Paul,” and an-other, “I



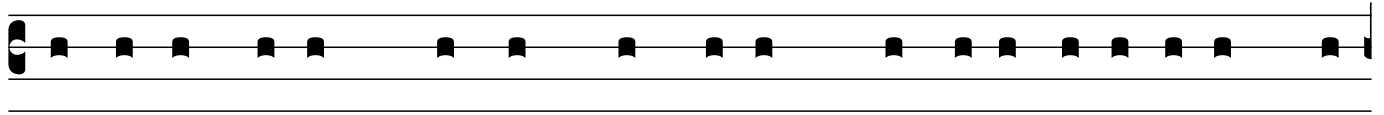
be-long to Apol-los,” are you not all too human? What then is Apol-los?



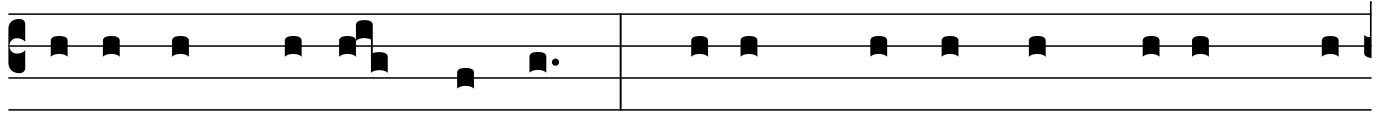
What is Paul? Servants through whom you came to be-lieve, as the Lord



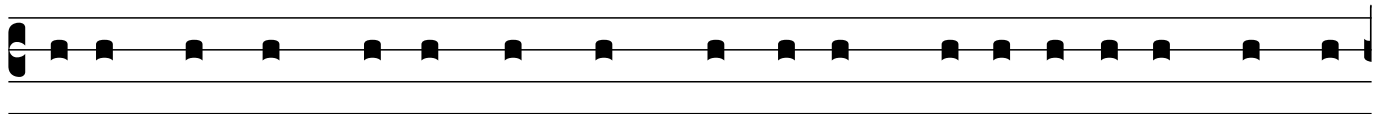
assigned to each. I planted, Apol-los wa-tered, but God gave the growth.



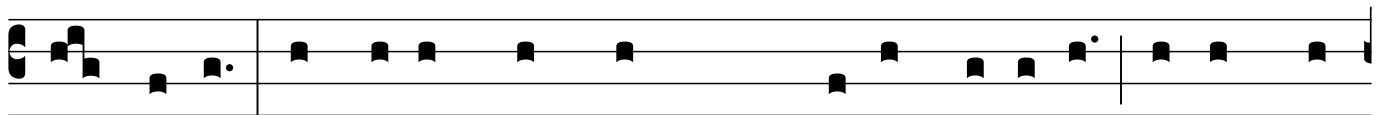
So neither the one who plants nor the one who wa-ters is an-ying, but



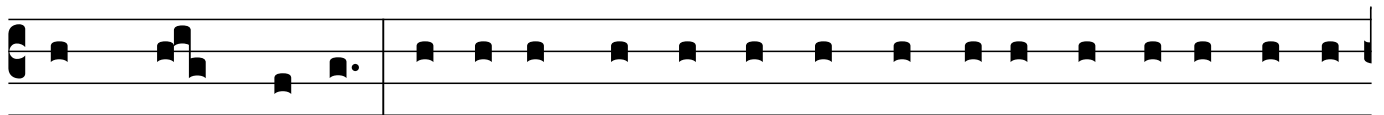
only God who gives the growth. The one who plants and the one who



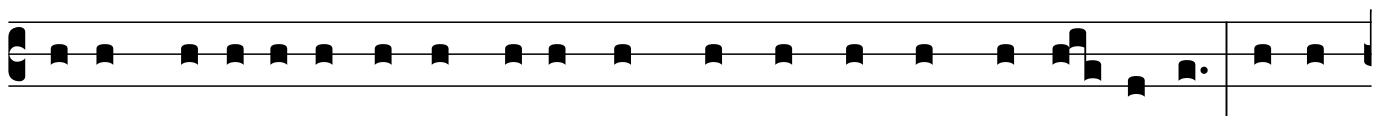
wa-ters have one purpose, and each will re-ceive wag-es according to their



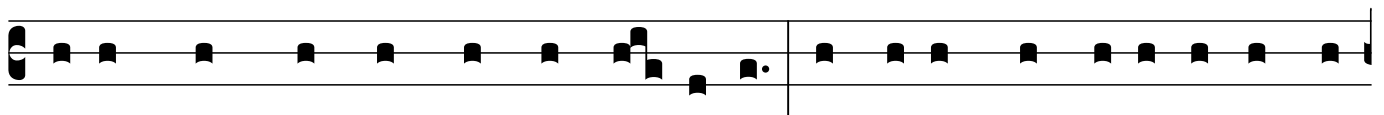
own la-bor. For we are God's coworkers, working to-gether; you are God's



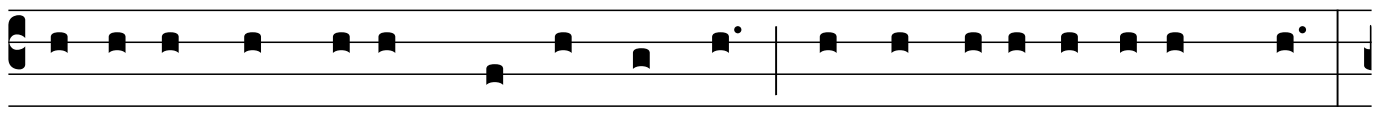
field, God's build-ing. According to the grace of God giv-en to me, like a wise



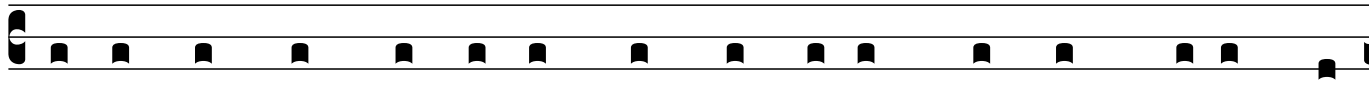
master builder I laid a foundation, and someone else is build-ing on it. Let each



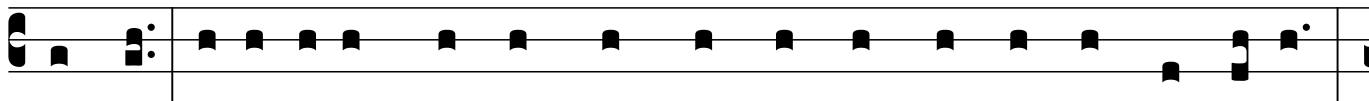
builder choose with care how to build on it. For no one can lay an-y founda-



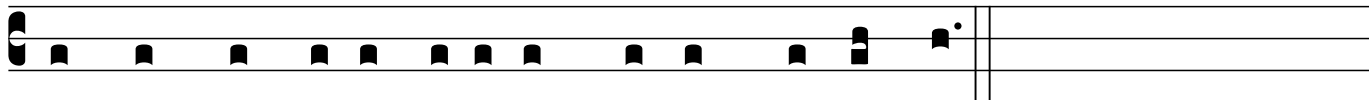
tion other than the one that has been laid; that foundation is Je-sus Christ.



Do you not know that you are God's temple and that God's Spir-it dwells



in you? If an-y- one destroys God's temple, God will destroy that person.



For God's temple is ho-ly, and you are that temple.