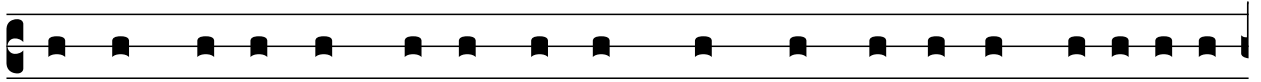
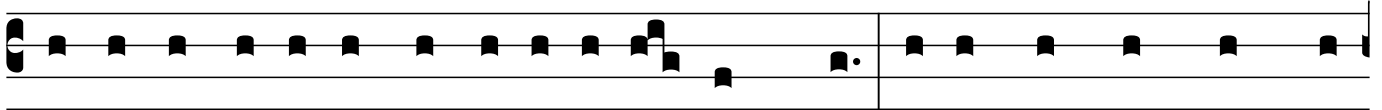


# 1 Corinthians 2:1-16

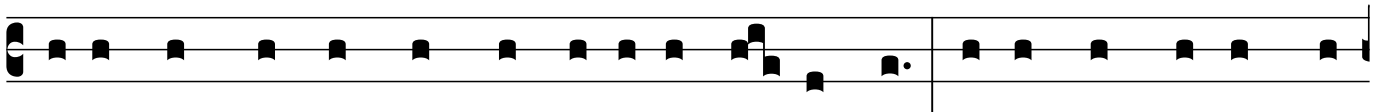
*Epiphany 5*



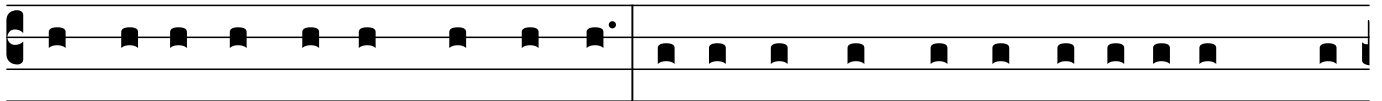
**A**nd so, brothers and sis-ters, I could not speak to you as spir-it-u-al



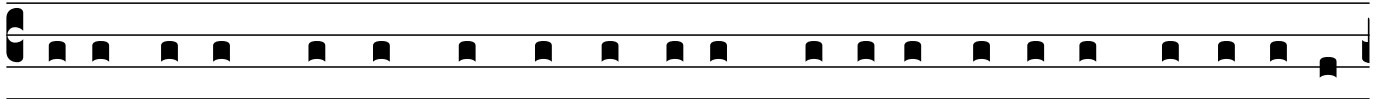
people but rather as fleshly, as infants in Christ. I fed you with milk, not



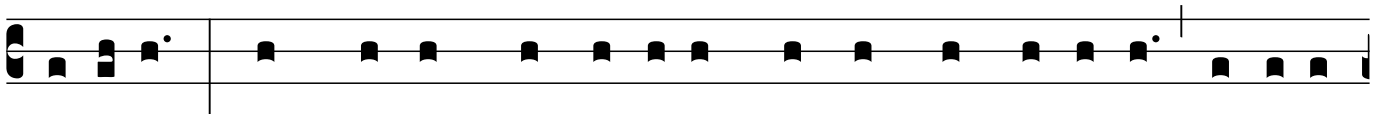
sol-id food, for you were not ready for sol- id food. E-ven now you are still



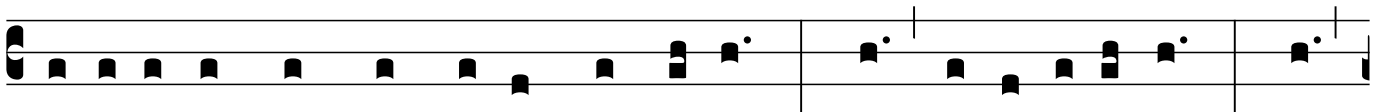
not ready, for you are still fleshly. For as long as there is jealousy and quar-



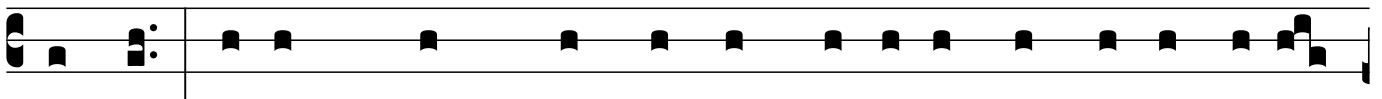
rel-ing among you, are you not fleshly and be-hav-ing according to human in-



cli-nations? For when one says, “I be-long to Paul,” and an-other, “I be-long



to Apol-los,” are you not all too human? What then is Apol-los? What



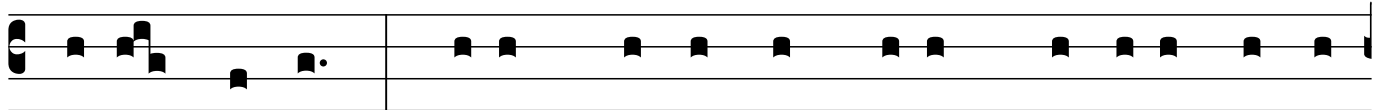
is Paul? Servants through whom you came to be-lieve, as the Lord assigned



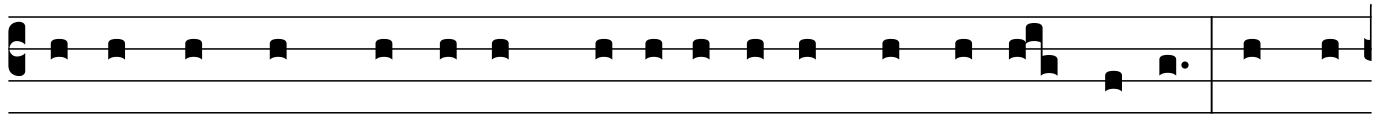
to each. I planted, Apol-los wa-tered, but God gave the growth. So neither



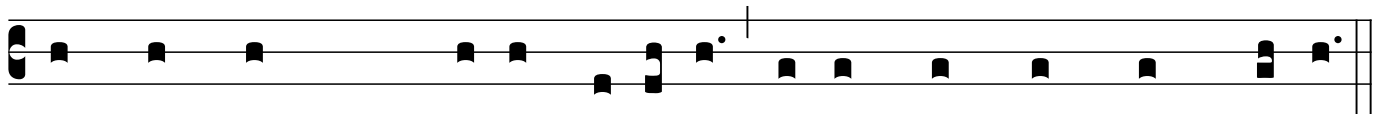
the one who plants nor the one who wa-ters is an-ything, but only God



who gives the growth. The one who plants and the one who wa-ters have one



purpose, and each will re-ceive wag-es according to their own la-bor. For we



are God's coworkers, working to-gether; you are God's field, God's build-ing.