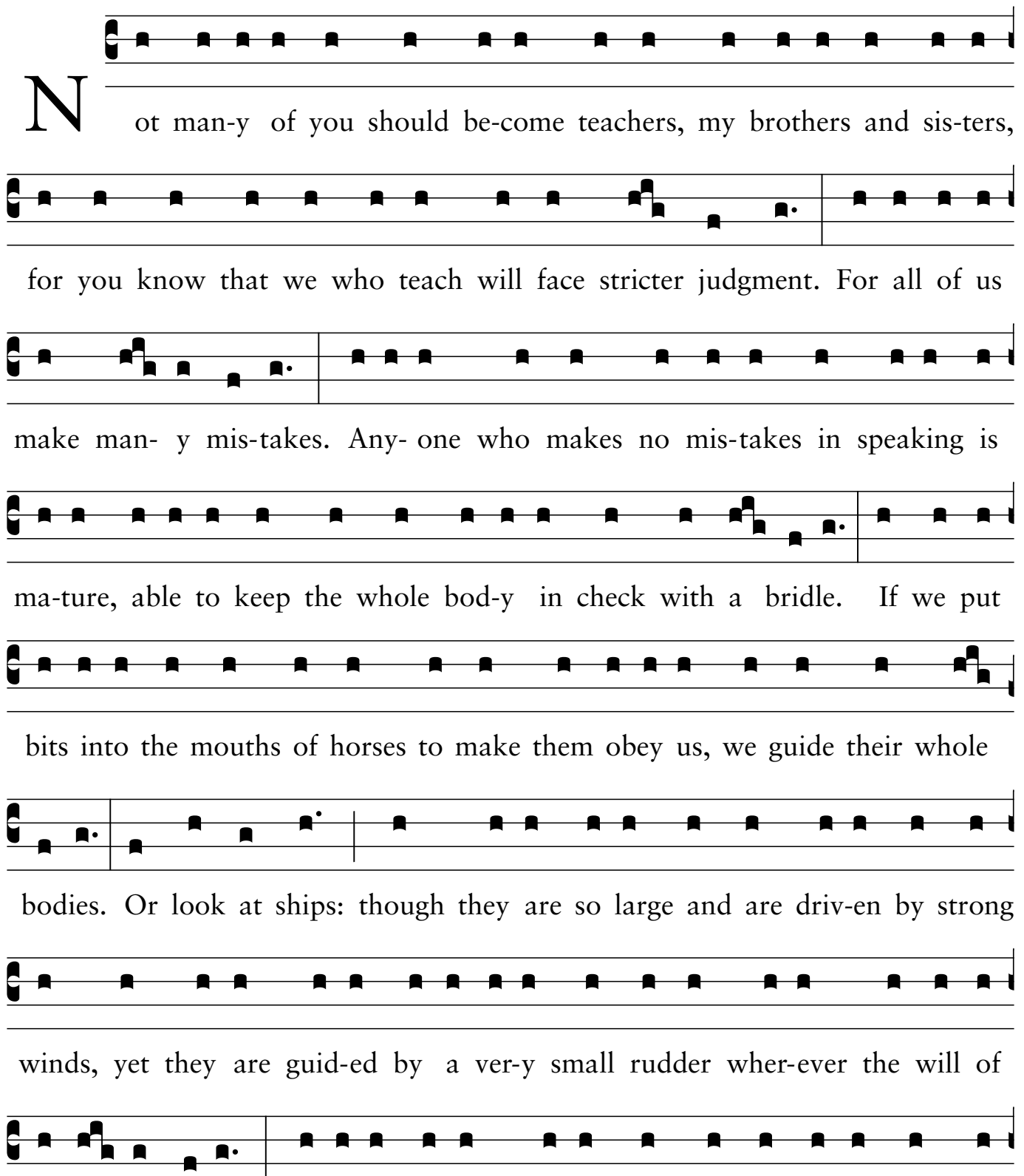
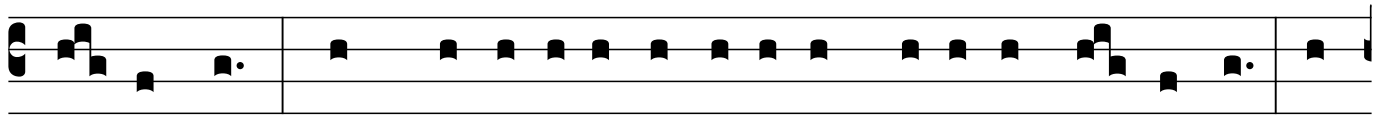


# James 3:1-12

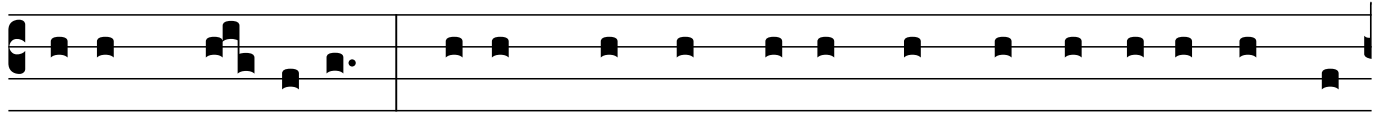
*Proper 19*



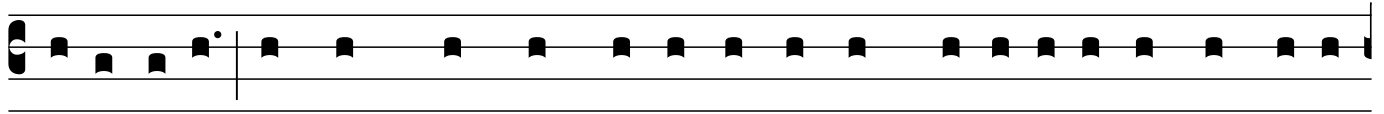
**N**ot man-y of you should be-come teachers, my brothers and sis-ters,  
for you know that we who teach will face stricter judgment. For all of us  
make man- y mis-takes. Any- one who makes no mis-takes in speaking is  
ma-ture, able to keep the whole bod-y in check with a bridle. If we put  
bits into the mouths of horses to make them obey us, we guide their whole  
bodies. Or look at ships: though they are so large and are driv-en by strong  
winds, yet they are guid-ed by a ver-y small rudder wher-ever the will of  
the pi- lot di-rects. So also the tongue is a small member, yet it boasts of



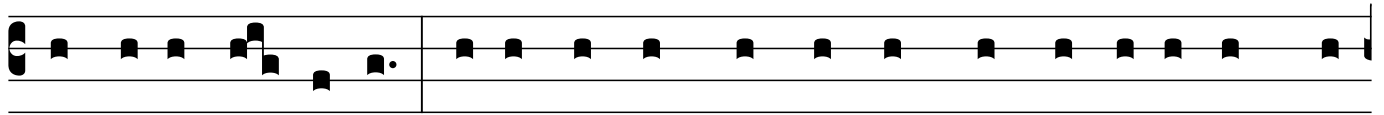
great exploits. How great a forest is set ablaze by a such a small fire! And



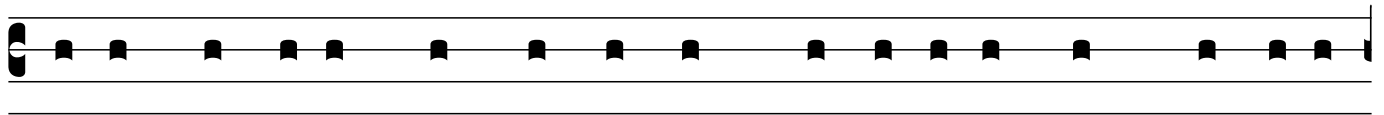
the tongue is a fire. The tongue is placed among our members as a world of



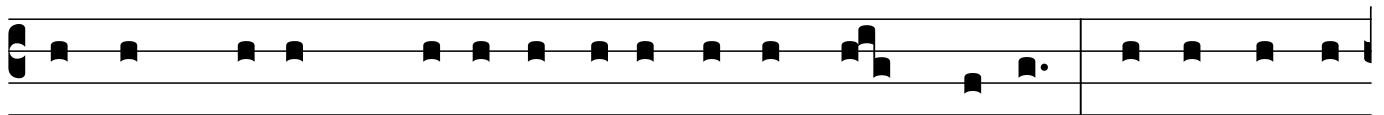
iniquity; it stains the whole body, sets on fire the cycle of life, and is it-



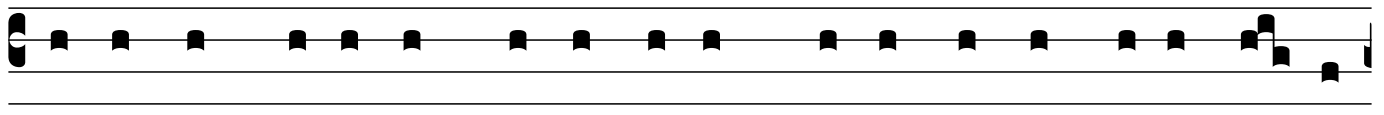
self set on fire by hell. For every species of beast and bird, of reptile and sea



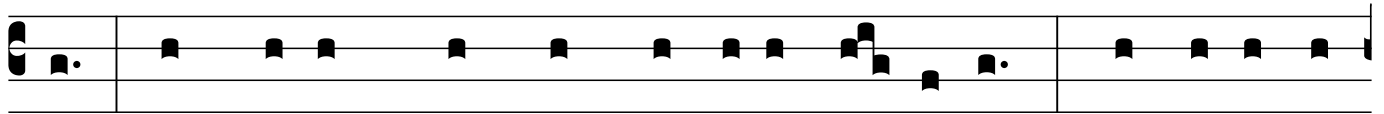
creature, can be tamed and has been tamed by the human species, but no one



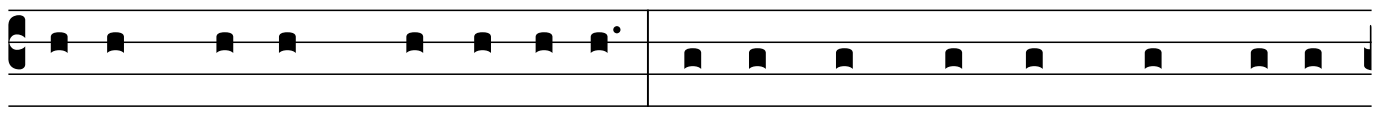
can tame the tongue—a restless evil, full of deadly poison. With it we bless



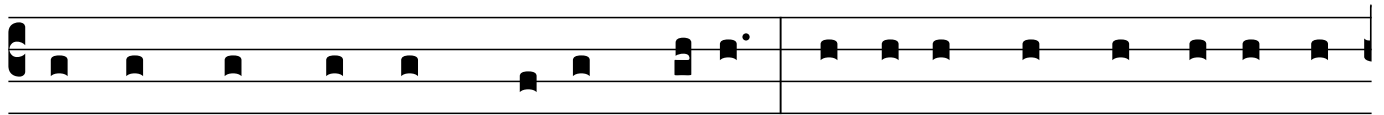
the Lord and Father, and with it we curse people, made in the likeness of



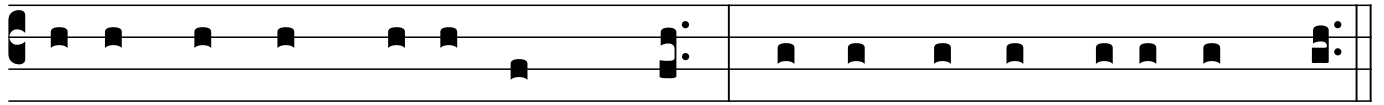
God. From the same mouth comes a blessing and a curse. My brothers and



sisters, this ought not to be so. Does a spring pour forth from the same



opening both fresh and brackish wa-ter? Can a fig tree, my brothers and



sis-ters, yield olives or a grapevine figs? No more can salt wa-ter yield fresh.