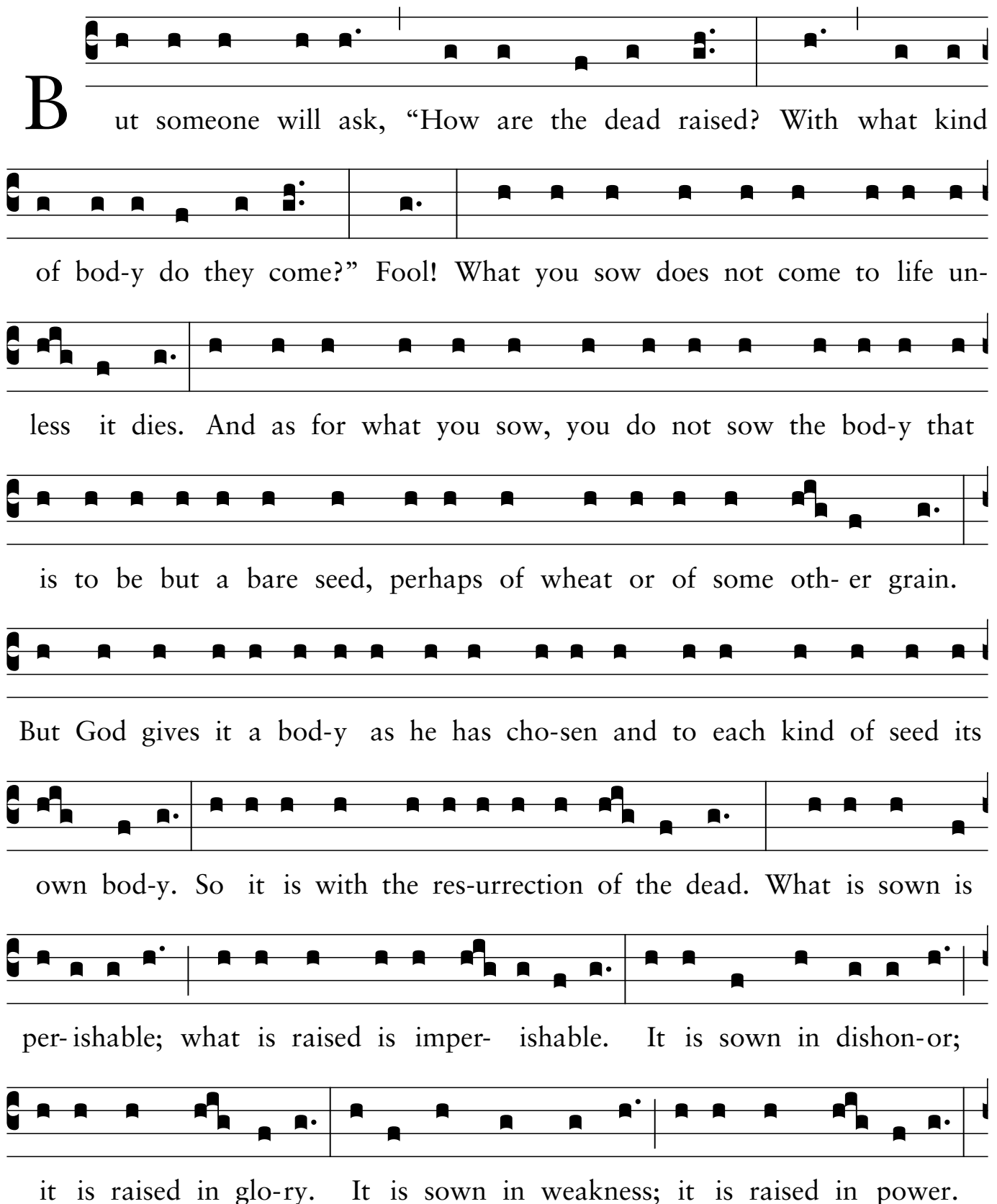
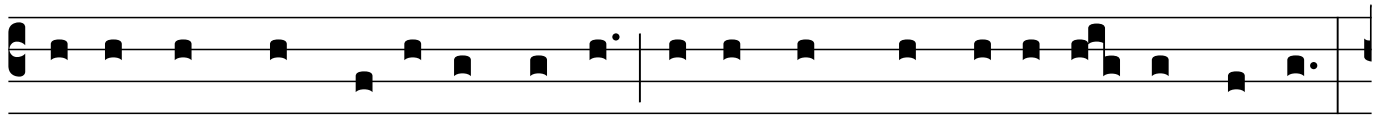


# 1 Corinthians 15:12-20

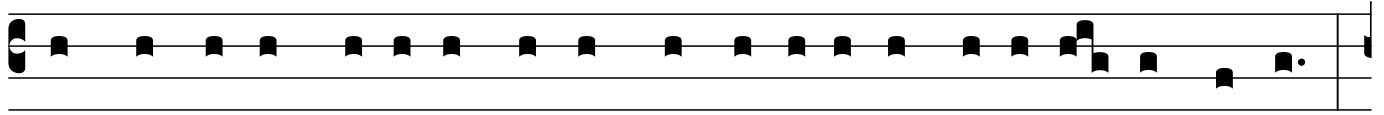
*Epiphany 6/Proper 1*



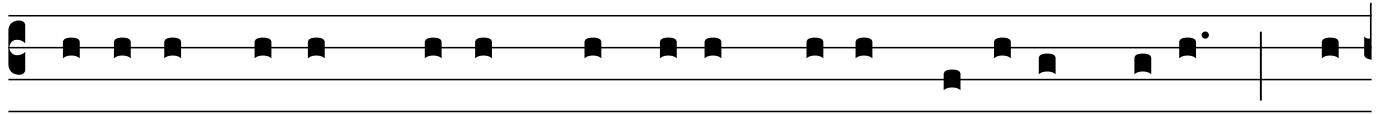
**B**ut someone will ask, “How are the dead raised? With what kind of bod-y do they come?” Fool! What you sow does not come to life unless it dies. And as for what you sow, you do not sow the bod-y that is to be but a bare seed, perhaps of wheat or of some oth-er grain. But God gives it a bod-y as he has cho-sen and to each kind of seed its own bod-y. So it is with the res-urrection of the dead. What is sown is per-ishable; what is raised is imper-ishable. It is sown in dishon-or; it is raised in glo-ry. It is sown in weakness; it is raised in power.



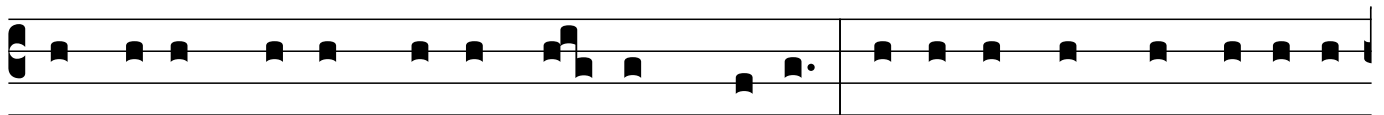
It is sown a phys-i-cal bod-y; it is raised a spir-it-u- al bod-y.



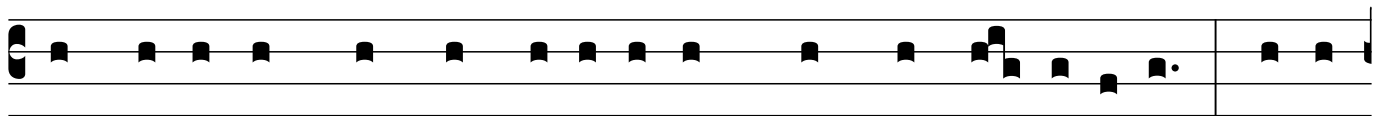
If there is a phys-i-cal bod-y, there is also a spir-it-u- al bod-y.



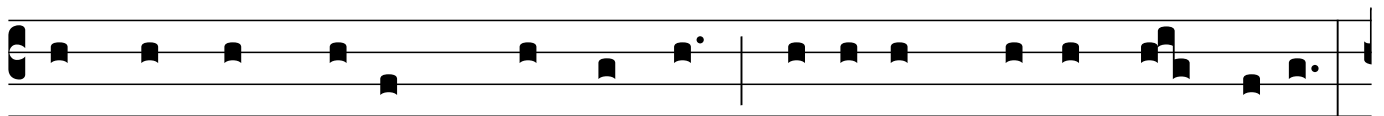
Thus it is writ-ten, "The first man, Adam, be-came a liv-ing be-ing"; the



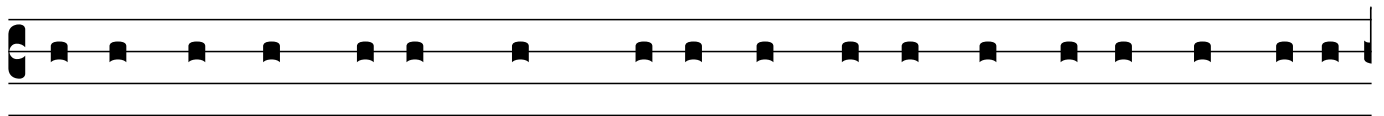
last Adam be-came a life-giv- ing spir-it. But it is not the spir-it-u-



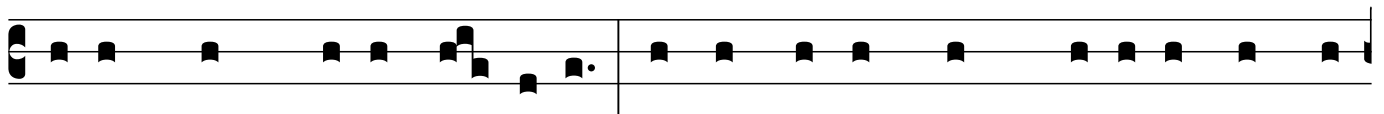
al that is first but the phys-i-cal and then the spir- it-u- al. The first



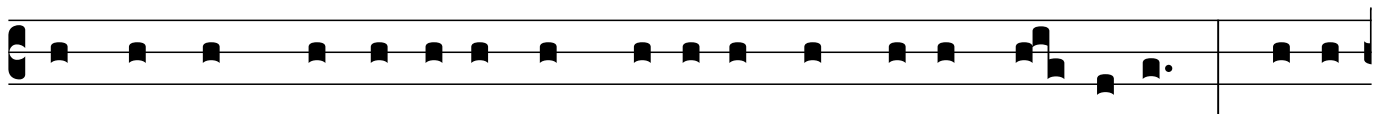
man was from the earth, made of dust; the sec-ond man is from heaven.



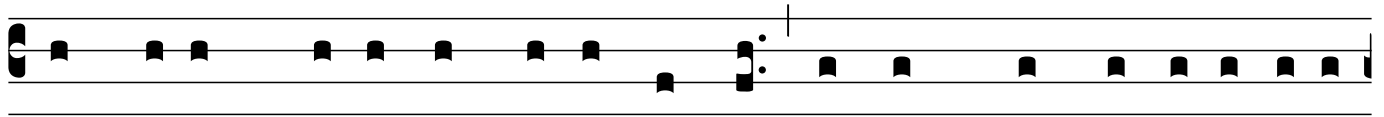
As one of dust, so are those who are of the dust, and as one of heaven,



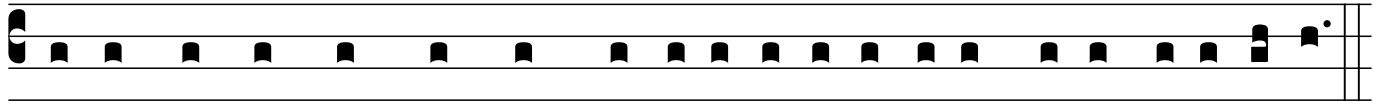
so are those who are of heaven. Just as we have borne the image of the



one of dust, we will also bear the image of the one of heaven. What I



am say-ing, brothers and sis-ters, is this: flesh and blood cannot inher-it



the kingdom of God, nor does the per-ishable inher-it the imper-ishable.