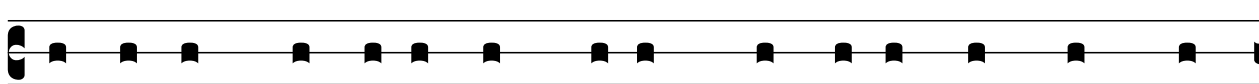
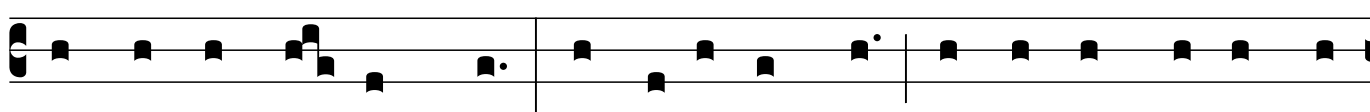


Ephesians 2:13-22

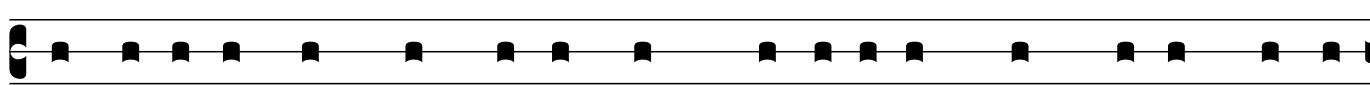
Ss. Simon and Jude



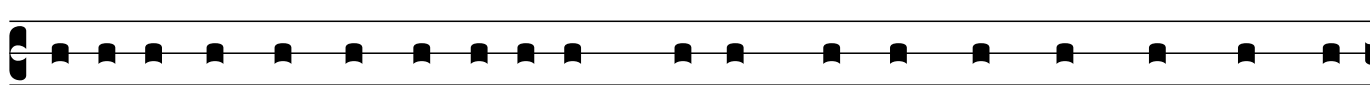
B ut now in Christ Je-sus you who once were far off have been brought



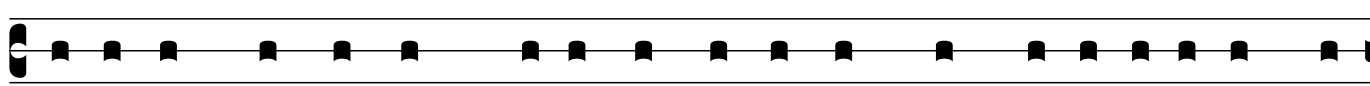
near by the blood of Christ. For he is our peace; in his flesh he has made



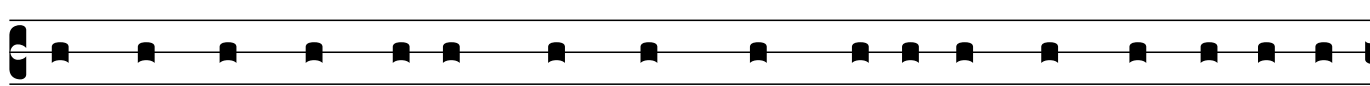
both into one and has bro-ken down the di-vid-ing wall, that is, the hos-



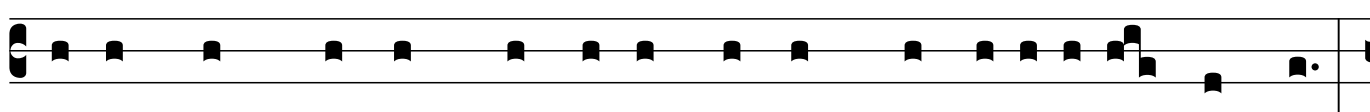
til- i-ty between us, a-bol-ishing the law with its commandments and or-



di-nances, that he might cre- ate in himself one new human-i-ty in place



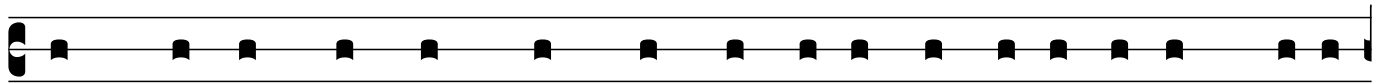
of the two, thus mak-ing peace, and might rec-oncile both to God in one



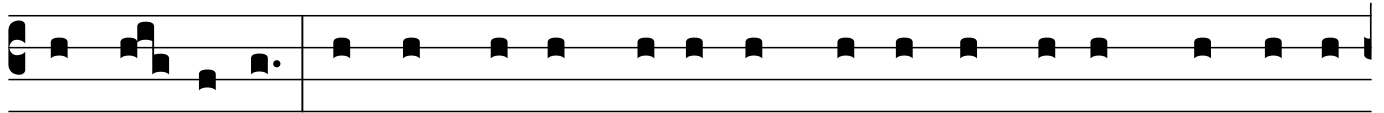
bod-y through the cross, thus put-ting to death that hostil- i-ty through it.



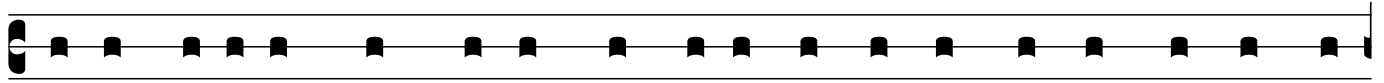
So he came and proclaimed peace to you who were far off and peace to



those who were near, for through him both of us have access in one Spir-it



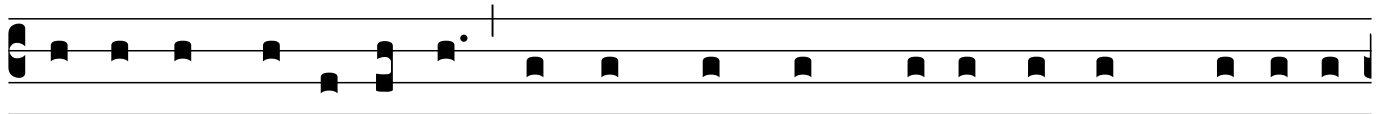
to the Father. So then, you are no longer strangers and al-iens, but you are



fel-low cit-i-zens with the saints and also members of the household of God,



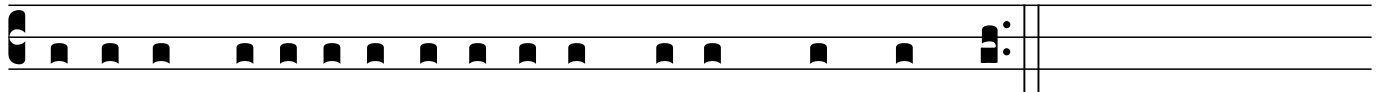
built up-on the foundation of the a-postles and prophets, with Christ Je-sus



himself as the cornerstone; in him the whole structure is joined to-gether



and grows into a ho-ly temple in the Lord, in whom you also are built



to-gether spir-it-u-al-ly into a dwell-ing place for God.