

# Luke 10:1-9

*Of a Missionary I*

**V**

The Ho-ly Gospel of our Lord Je-sus Christ according to Luke.

*R* *Glo-ry to you, Lord Christ.* After this the Lord appointed sev-enty others

and sent them on ahead of him in pairs to every town and place where

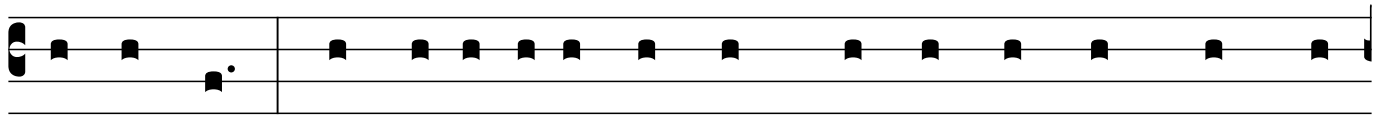
he himself intended to go. He said to them, 'The harvest is plenti-ful, but

the labourers are few; therefore ask the Lord of the harvest to send out

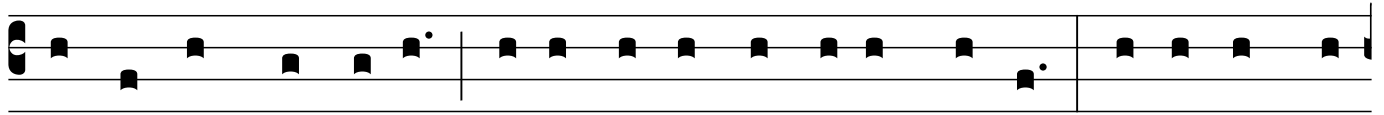
labourers into his harvest. Go on your way. See, I am sending you out

like lambs into the midst of wolves. Carry no purse, no bag, no sandals;

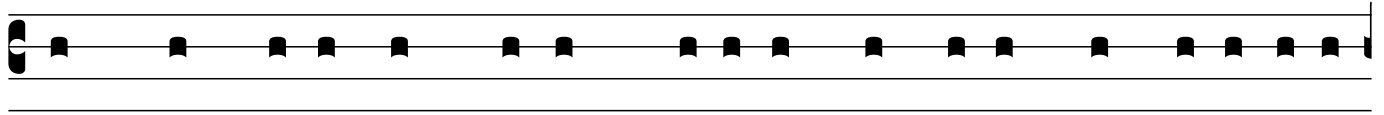
and greet no one on the road. What-ev-er house you enter, first say, 'Peace



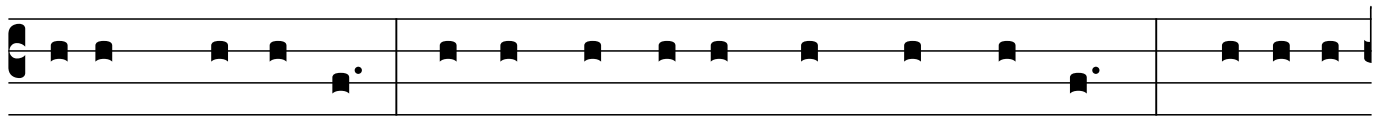
to this house!” And if an-y- one is there who shares in peace, your peace



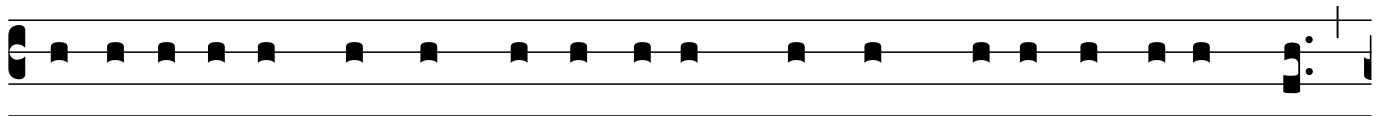
will rest on that person; but if not, it will re-turn to you. Remain in the



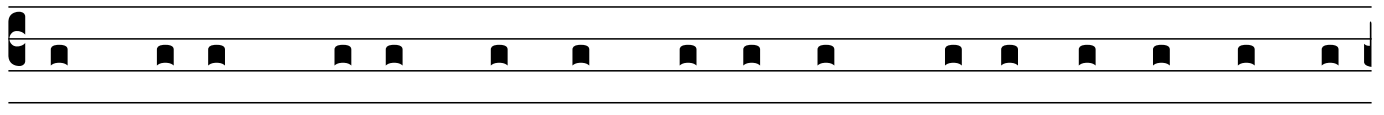
same house, eat-ing and drinking what-ev-er they pro-vide, for the labourer



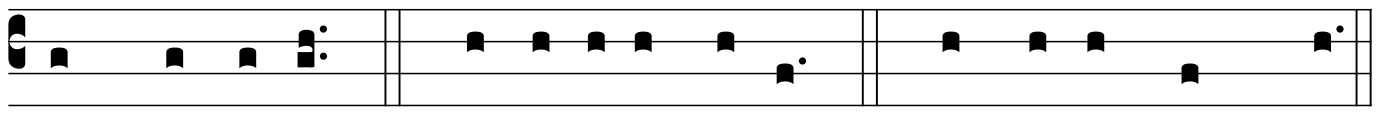
de-serves to be paid. Do not move about from house to house. When-ev-er



you enter a town and its people welcome you, eat what is set be-fore you;



cure the sick who are there, and say to them,“The kingdom of God has



come near to you.” *∿* The Gospel of the Lord. *℞ Praise to you, Lord Christ.*