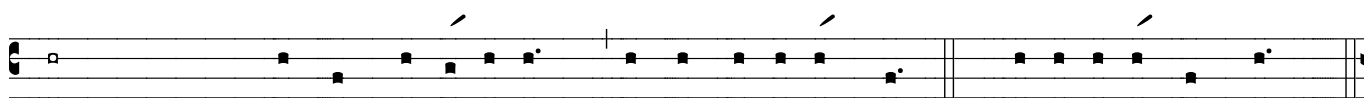
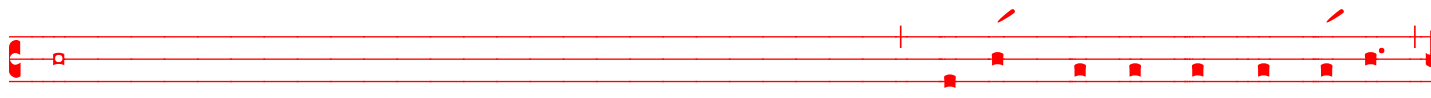


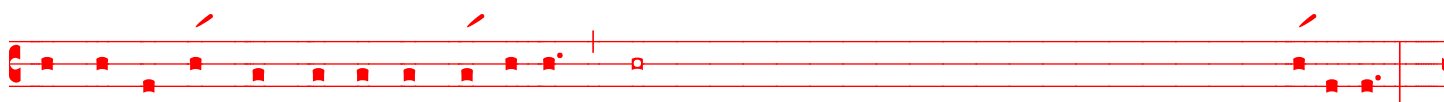
St. Barnabas (June 11)
Matthew 10:7-16 (ABC RCL) (NRSV)



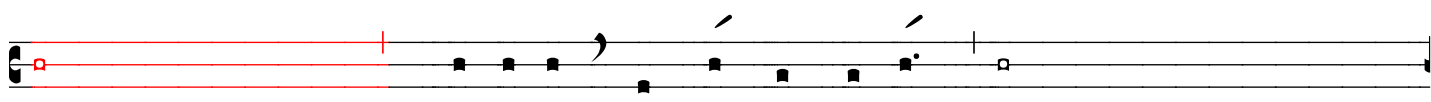
Ⲱ The Holy Gospel of our Lord Je-sus Christ ac-cord-ing to Matt-hew. Ⲡ *Glo-ry to you, Lord Christ.*



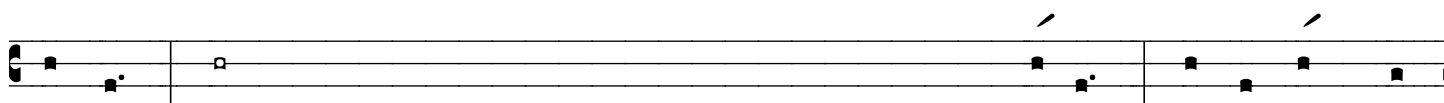
[5 These twelve Jesus sent out with the following instructions: “Go no-where a-mong the Gen-tiles,



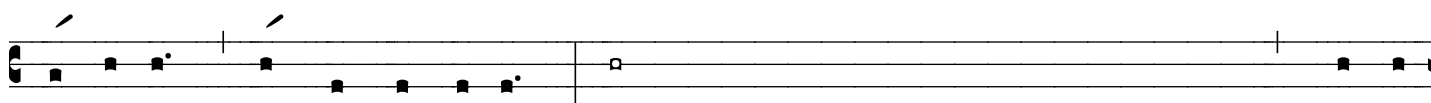
and en-ter no town of the Sa-mar-i-tans, 6 but go rather to the lost sheep of the house of Is-ra-el.] or



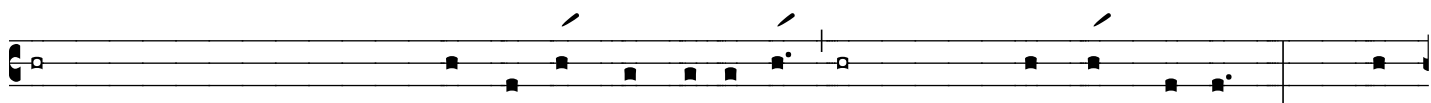
[Jesus said to the Twelve,] 7 “As you go, pro-claim the good news, ‘The kingdom of heaven has



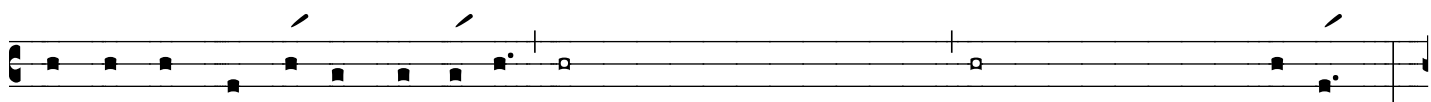
come near.’ 8 Cure the sick, raise the dead, cleanse the lepers, cast out de-mons. You re-ceived with-



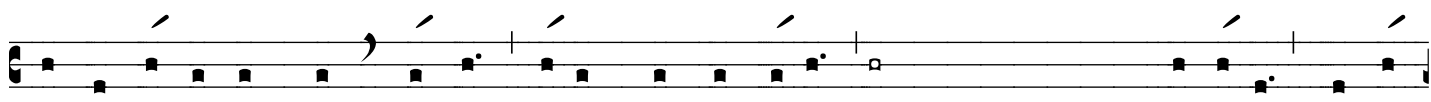
out pay-ment; give with-out pay-ment. 9 Take no gold, or silver, or copper in your belts, 10 no bag



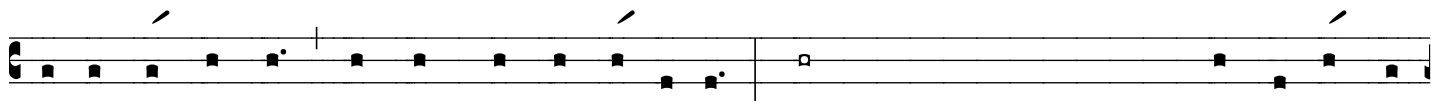
for your journey, or two tu-nics, or san-dals, or a staff; for laborers de-serve their food. 11 What -



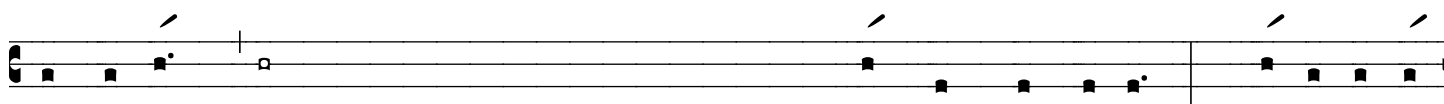
ev - er town or vil-lage you en- ter, find out who in it is worthy, and stay there until you leave. 12



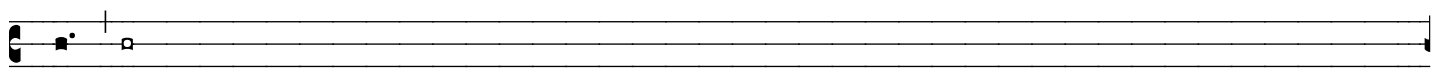
As you en-ter the house, greet it. 13 If the house is wor-thy, let your peace come up-on it; but if



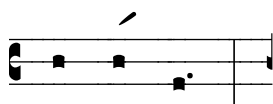
it is not wor - thy, let your peace re - turn to you. 14 If anyone will not welcome you or lis - ten



to your words, shake off the dust from your feet as you leave that house or town. 15 Tru - ly I tell



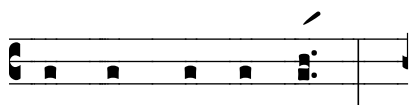
you, it will be more tolerable for the land of Sodom and Gomorrah on the day of judgment than



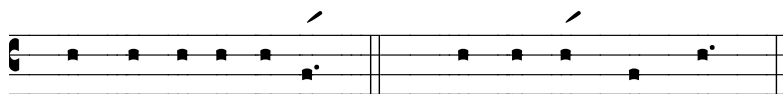
for that town.



16 “See, I am sending you out like sheep in - to the midst of wolves; so be wise as ser - pents and



in - no - cent as doves.



✠ The Gos - pel of the Lord. ✠ *Praise to you, Lord Christ.*

Prepared by William G. Gartig May 26, 2010